

EL PASO WATER UTILITIES – PUBLIC SERVICE BOARD

ADDENDUM NO. 2

FOR

CANAL WATER TREATMENT PLANT FILTER GALLERY IMPROVEMENTS

BID No. 10-23

February 24, 2023

In accordance with the Instructions to Bidders of the Contract Documents, the following revision to the Plans and/or Specifications shall become part of the Contract Documents and the Bidders shall acknowledge receipt on their Bid Proposal.

EL PASO WATER UTILITIES

ENGINEER OF RECORD

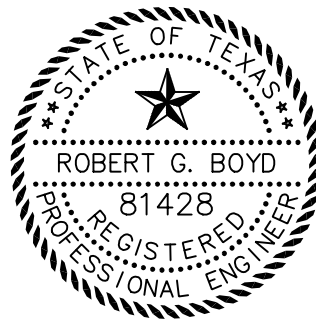


Robert L. Davidson
Contract Construction
Administrator*
February 24, 2023



Robert Boyd, P.E., TBPE 81428
Project Manager
H₂O Terra, LLC - Firm No. F-2103
February 24, 2023

*The Administrator's signature certifies only that this document shall become part of the Contract Documents for the referenced project. His signature is not a representation that the content of this document is technically correct.



RECEIPT OF THIS ADDENDUM MUST BE ACKNOWLEDGED IN WRITING AS REQUIRED BY THE BID DOCUMENTS

ANSWERS TO SUBMITTED QUESTIONS

Q1. Spec 1500, 2.02 refers to Spec 05050 for BOLTS AND NUTS FOR FLANGES FOR STEEL PIPE, yet Spec 05050 does not define the BOLTS AND NUTS FOR FLANGES FOR STEEL PIPE. Please provide guidance for the BOLTS AND NUTS requirements for the steel pipe.

A. See additional specification information below for SECTION 05050.

Q2. Please consider allowing Valmatic Butterfly Valves as equals per Spec 11360 & 15100 (see attached).

A. Approval of alternate items, "as equal" to items specified in the bid documents will not be provided during the project bid phase.

Any item (material or equipment) submitted by the successful bidder for approval "as equal" to items specified in the bid documents will be evaluated as per the EPWater standard submittal review process (after bid award) to ensure that all items satisfy the technical specifications for inclusion in the project.

Q3. Please consider allowing Cla-Val Control Valves as equals per Spec 11360 & 15100 (see attached).

A. Approval of alternate items, "as equal" to items specified in the bid documents will not be provided during the project bid phase.

Any item (material or equipment) submitted by the successful bidder for approval "as equal" to items specified in the bid documents will be evaluated as per the EPWater standard submittal review process (after bid award) to ensure that all items satisfy the technical specifications for inclusion in the project.

Q4. Plan Sheet G3, general note #7 requires all Hardware to be 316SST, unless otherwise noted. The Hanger Material shown on Plan Sheet M104 (Turnbuckle, Clevis, Nuts, etc.) has no notes otherwise, per General Note #7 these should be 316SST. Will 316SST be compatible with existing material? What material should hanger accessories be?

A. See note revised Sheet M104.

VOLUME 1 – AGREEMENT AND SPECIFICATIONS

AD-1.1 SECTIONS 00010 - INFORMAL NOTICE; 00020 – INVITATION TO BID; 00500 – STANDARD FORM OF AGREEMENT BETWEEN OWNER AND CONTRACTOR; 01010 – SUMMARY OF WORK; and 01025 – MEASUREMENT AND PAYMENT:

In the Summary of Work Description, Delete Item 4 and Item 6 in their entirety and replace with the following to address the actual number of air release valves indicated on the plans:

ITEM 4. Remove and dispose of approximately 125 linear feet of existing 30-inch cement lined steel pipe to include fittings and supports, **FOUR (4) ½-inch air release VALVES**, four (4) 30-inch butterfly valves, and one (1) 30-inch venturi-type rate of flow controller.

ITEM 6. Furnish and install one (1) 24-inch rate of flow control valve, three (3) 30-inch motor actuated butterfly valves **and FOUR (4) ½-inch air release VALVES**.

AD-1.2 SECTION 05050 – BOLTS, WASHERS, DRILLED ANCHORS AND EYEBOLTS

PAGE 2 – **ADD** the following Item 2.06

2.06 BOLTS AND NUTS FOR FLANGES FOR STEEL

Unless otherwise indicated in the drawing, bolts, and nuts for flanges for steel pipe shall conform to AWWA C207. Bolts shall be ASTM A193, Grade B7. Nuts shall be ASTM A194, Grade 2H. Flanges for steel pipe shall be fastened with washers on both sides of the joint, and washers shall be ASTM F436 hardened washers.

VOLUME 2 – DRAWINGS

- AD-2.1 DRAWING D102 (SHEET 04 OF 34) *DEMOLITION SECTION*
- A. **DELETE** THIS SHEET IN ITS ENTIRETY AND **REPLACE** WITH THE REVISED
ADDENDUM NO. 2 SHEET D102
- AD-2.2 DRAWING D103 (SHEET 05 OF 34) *DEMOLITION SECTION*
- A. **DELETE** THIS SHEET IN ITS ENTIRETY AND **REPLACE** WITH THE REVISED
ADDENDUM NO. 2 SHEET D103.
- AD-2.3 DRAWING M101 (SHEET 07 OF 34) *FILTER GALLERY WASH WATER PIPE PLAN*
- A. **DELETE** THIS SHEET IN ITS ENTIRETY AND **REPLACE** WITH THE REVISED
ADDENDUM NO. 2 SHEET M101.
- AD-2.4 DRAWING M102 (SHEET 08 OF 34) *FILTER GALLERY WASH WATER PIPE
SECTION*
- A. **DELETE** THIS SHEET IN ITS ENTIRETY AND **REPLACE** WITH THE REVISED
ADDENDUM NO. 2 SHEET M102.
- AD-2.4 DRAWING M301 (SHEET 16 OF 34) *MECHANICAL IMPROVEMENT PLAN*
- A. **DELETE** THIS SHEET IN ITS ENTIRETY AND **REPLACE** WITH THE REVISED
ADDENDUM NO. 2 SHEET M301.

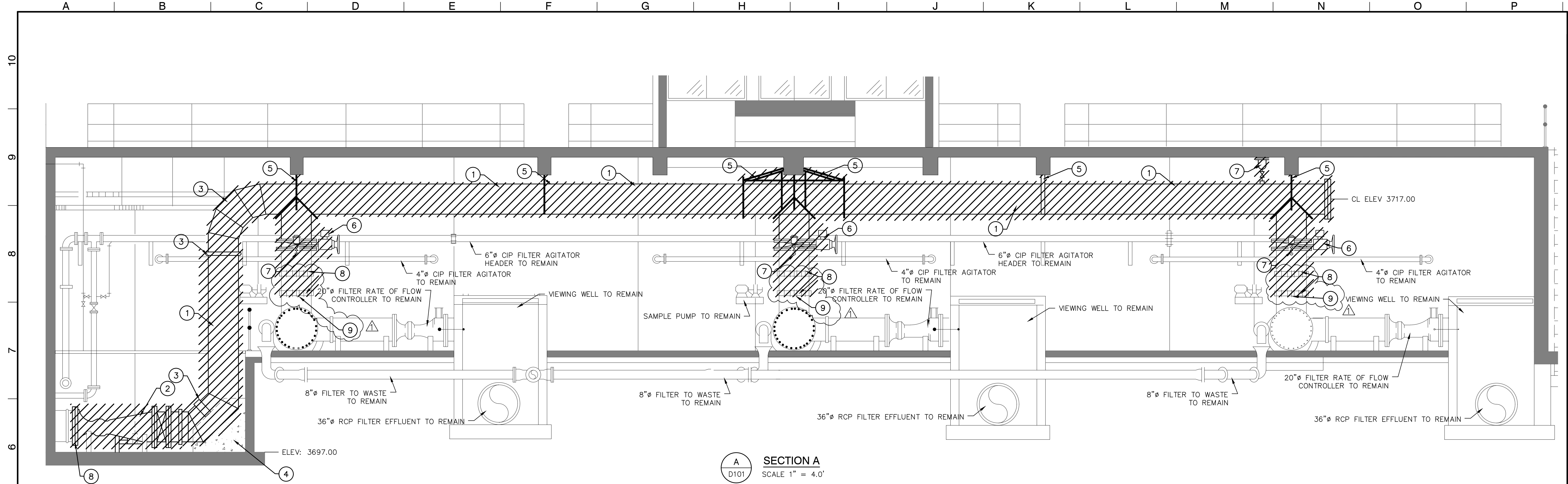
ATTACHMENTS

DRAWINGS:

- D102 – DEMOLITION SECTION (ADDENDUM NO. 2)**
D103 – DEMOLITION SECTION (ADDENDUM NO. 2)
M101 – FILTER GALLERY WASH WATER PIPE PLAN (ADDENDUM NO. 2)
M102 – FILTER GALLERY WASH WATER PIPE SECTION (ADDENDUM NO. 2)
M104 – PIPE HANGER DETAILS (ADDENDUM NO. 2)
M301 - MECHANICAL IMPROVEMENT PLAN (ADDENDUM NO. 2)

Addendum No. 2, pages 1 through 4 and attachments shall become part of the Contract and all provisions of the Contract shall apply thereto. The time provided for the completion of the Contract is not changed. Bidders shall acknowledge receipt of all Addenda by number in the space provided in the Proposal.

****END OF ADDENDUM NO. 2 ****



KEYED NOTES

1. REMOVE 30" WASH WATER HEADER PIPING AND SUPPORTS.
2. REMOVE 30" WASH WATER RATE OF FLOW CONTROL VALVE AND FLOW METER. PROVIDE TEMPORARY BLIND FLANGE AT PIPE DISCONNECT POINT.
3. REMOVE 30" WASH WATER FITTINGS, COUPLINGS AND SUPPORTS.
4. EXISTING THRUST BLOCK TO REMAIN
5. REMOVE PIPE HANGERS
6. REMOVE 30" WASH WATER CYLINDER OPERATED BUTTERFLY VALVES AND CONTROLS.
7. REMOVE 1/2" AUTOMATIC AIR RELEASE VALVES
8. REMOVE 30" COUPLING
9. PIPE REMOVAL LIMITS. PROVIDE TEMPORARY BLIND FLANGE

LEGEND

 ITEMS TO BE REMOVED

DATE

02/17/23

REVISIONS

AMENDED NOTATIONS PER ADDENDUM NO. 2

BY

RGB

LINE IS 2 INCHES
AT FULL SCALE
(IF NOT 2" - SCALE ACCORDINGLY)

W.O.: 061720-8

DATE: JAN. 2023

DESIGNED: I.D.R.

DRAWN: A.A.

CHECKED: R.A.L.

APPROVED: R.G.B.

H₂



Terra

ENGINEERING, SURVEYING, SOLUTIONS.

TBPE FIRM NO. F-2103 TBPLS FIRM NO. 10060700

2020 E. MILLS AVENUE El Paso, TX 79901

(915) 533-1418 FAX: (915) 533-4972

STATE OF TEXAS



ROBERT G. BOYD

81428

REGISTERED PROFESSIONAL ENGINEER

1/20/2023



el paso
WATER

CANAL WATER TREATMENT PLANT FILTER GALLERY IMPROVEMENTS

DRAWING NUMBER

SHEET TITLE

DEMOLITION SECTION

SHEET No.
5 OF 34

A

B

C

D

E

F

G

H

I

J

K

L

M

N

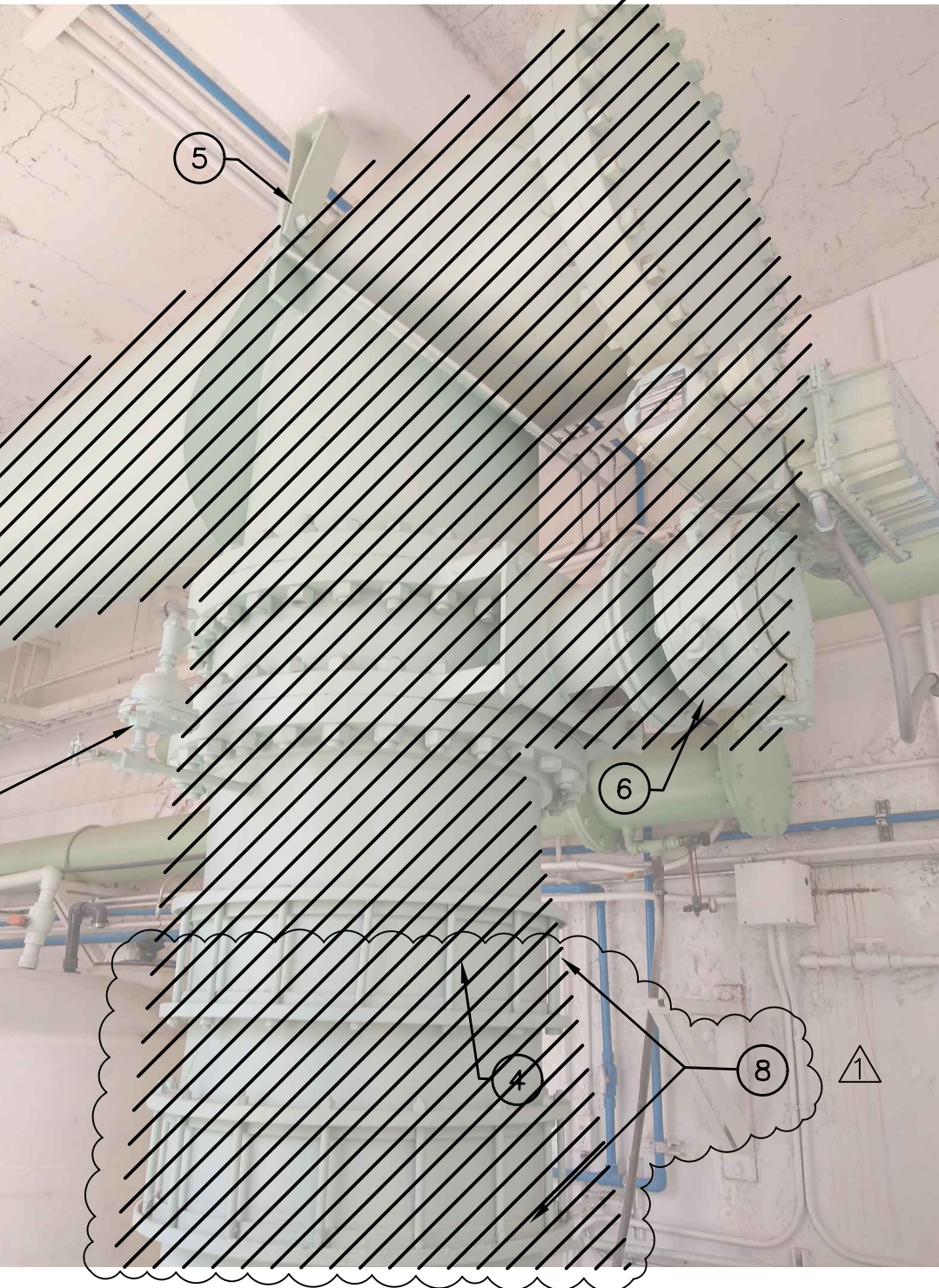
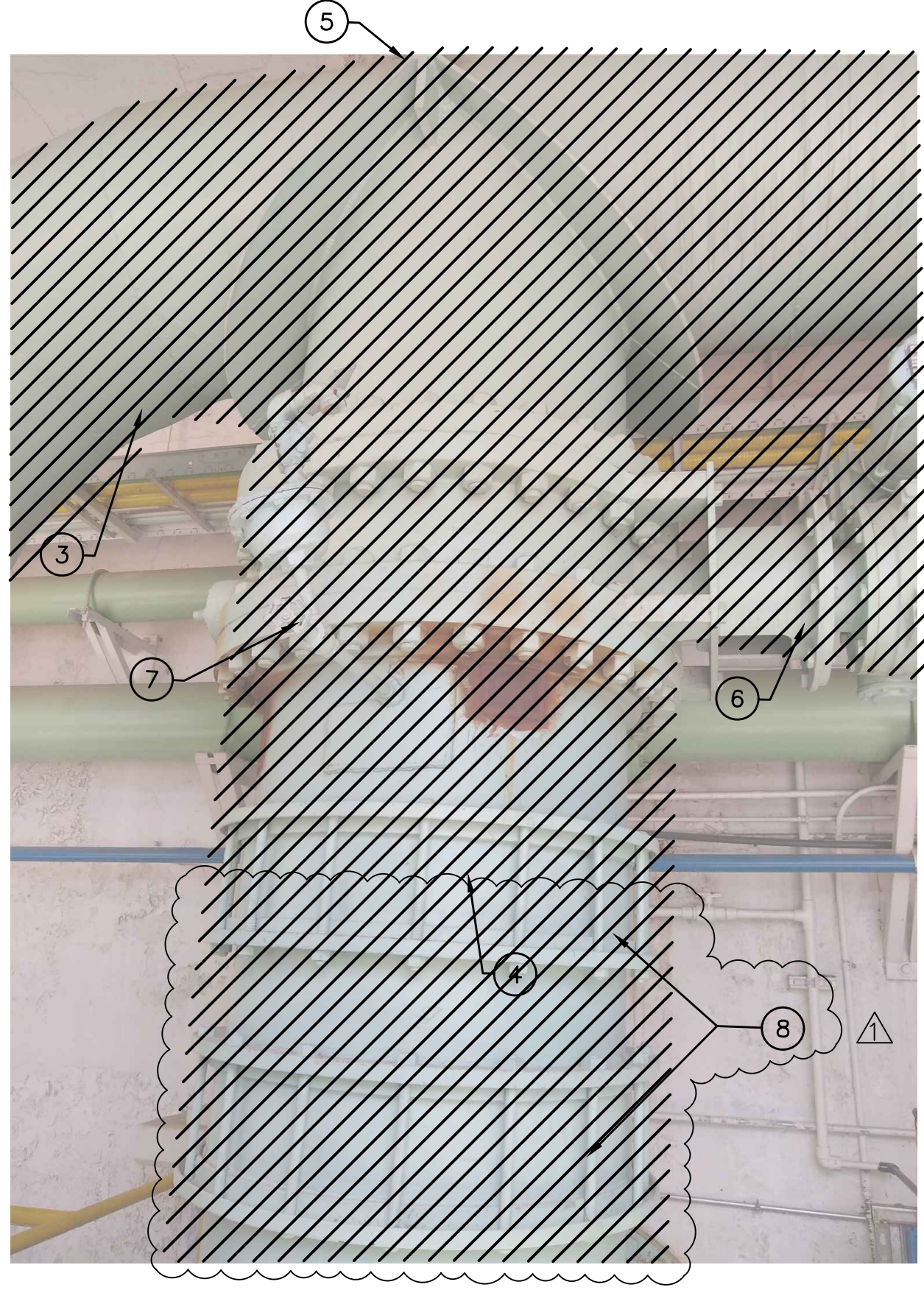
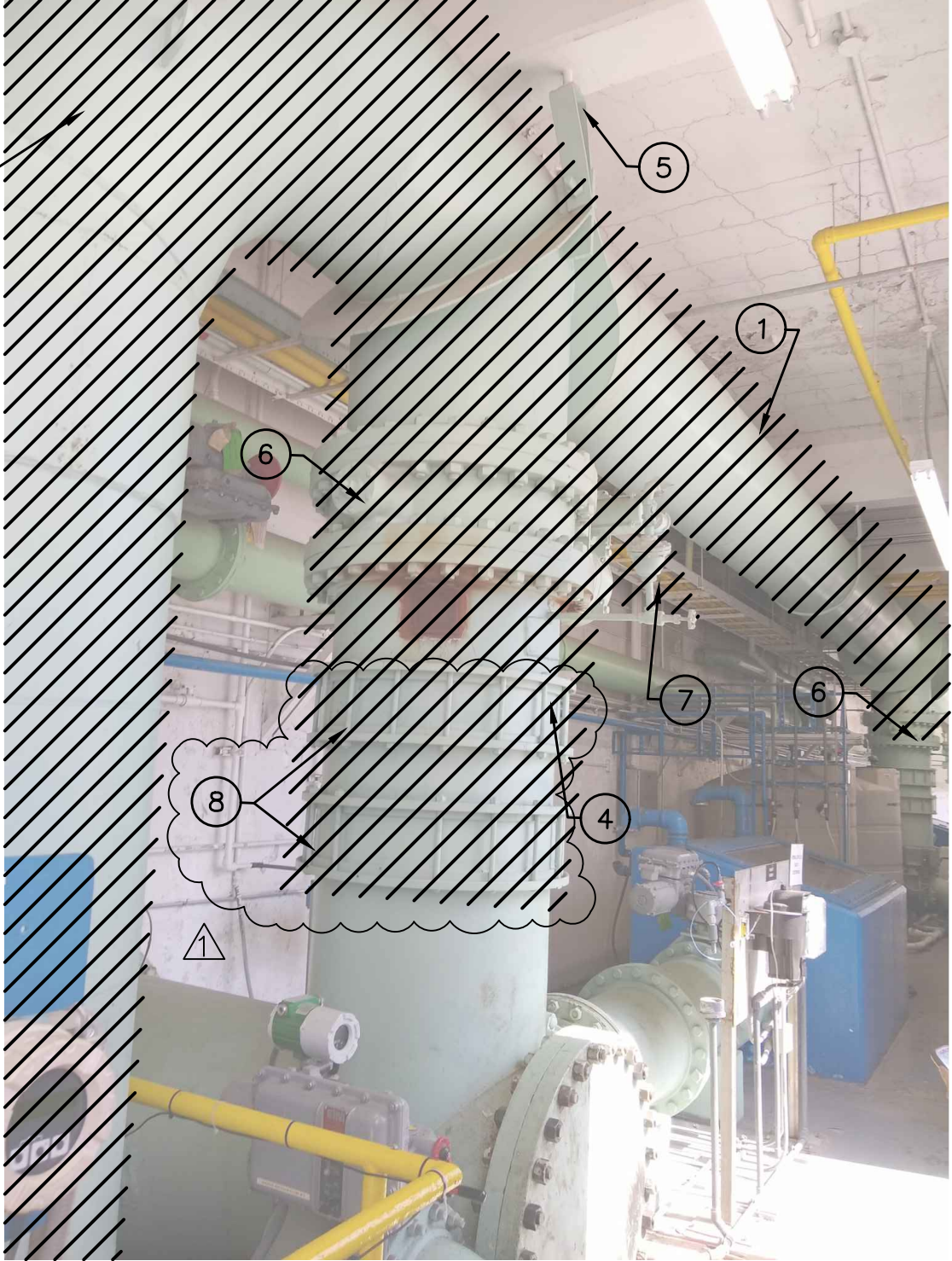
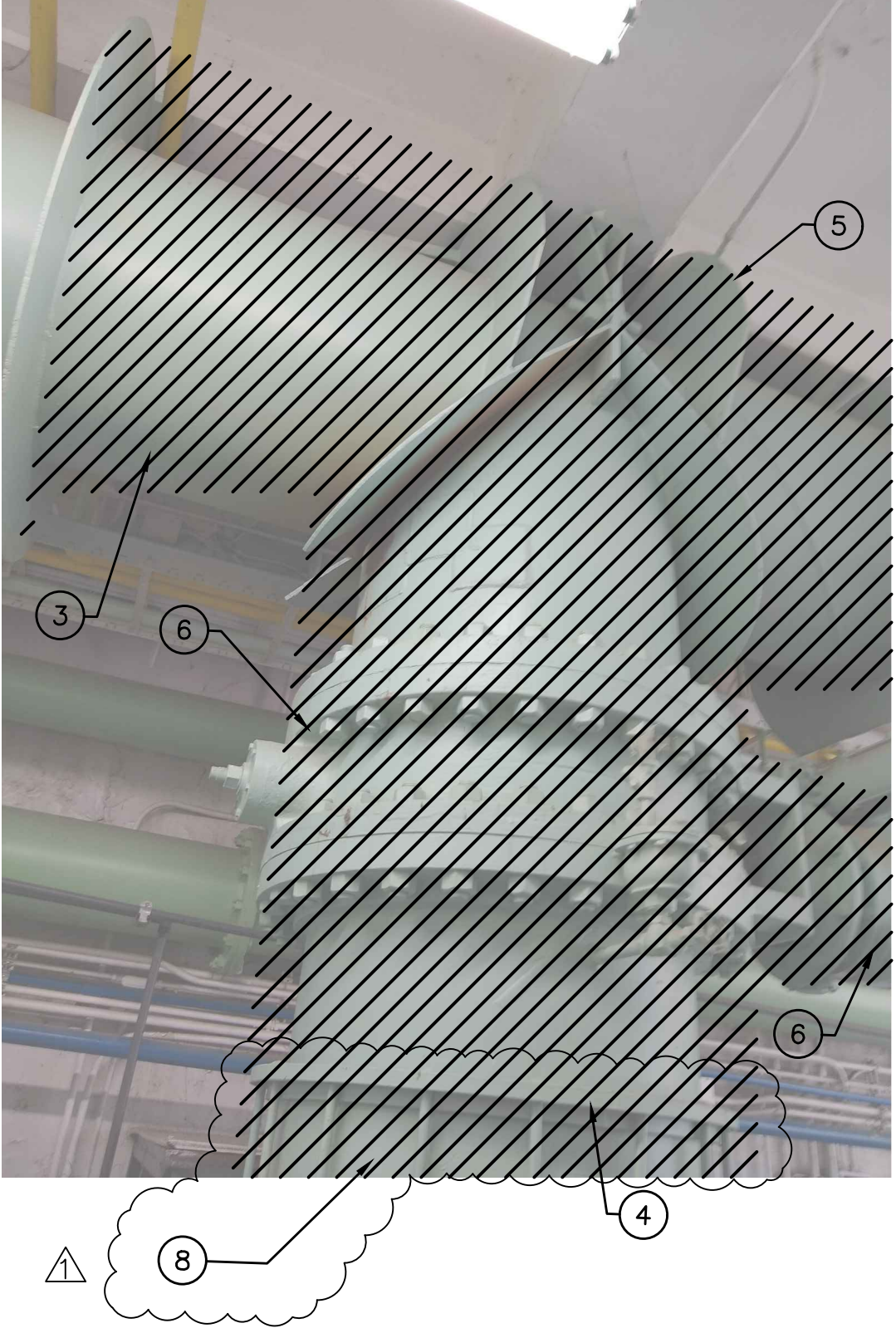
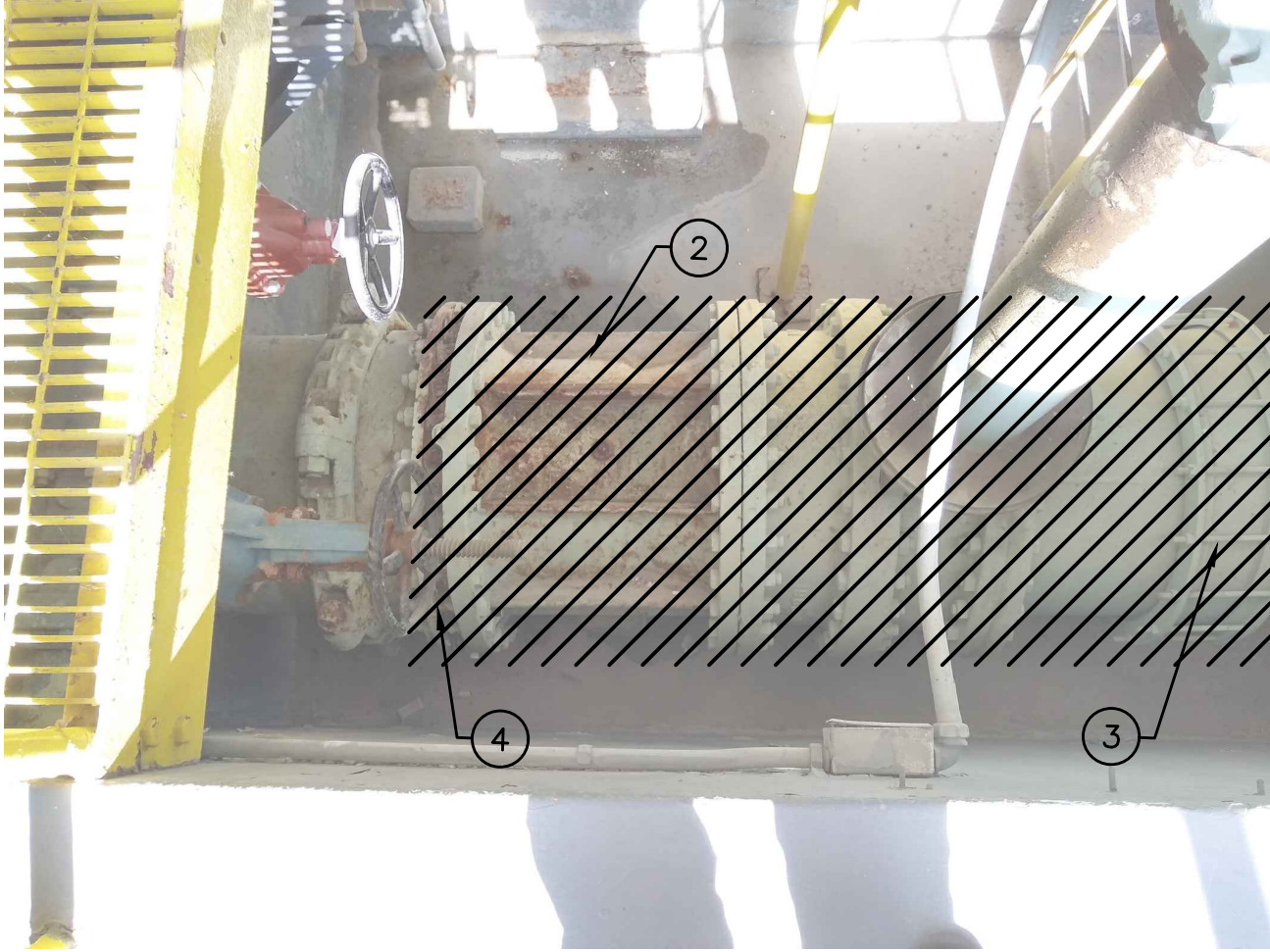
O

P

FILE 17, 2023, 3:14pm
\\SERVER\clients\El Paso Water\061720\061720-8.dwg

Feb 17, 2023 - 3:14pm
\\SERVER\CLIENTS\EI Paso Water\061720-8 Design - Canal WTP Filter Gallery\05-CADD\05-Filter Gallery\FINAL - 100%\\D101-D102 DEMO SHEETS.dwg

Feb 17, 2023 - 3:14pm
\\SERVER\CLIENTS\El Paso Water\061720-8 Design - Canal WTP Filter Gallery\05-CADD\05-Filter Gallery\FINAL - 100%\\D101-D103 DEMO SHEETS.dwg

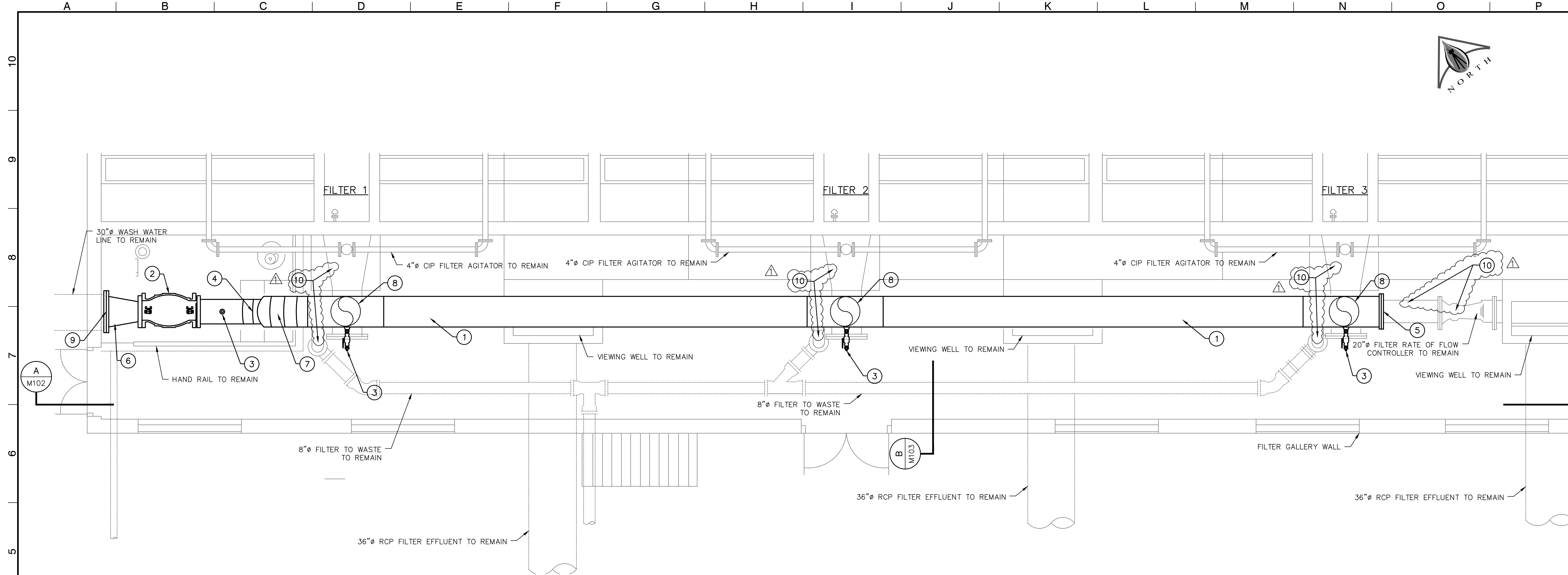


- KEYED NOTES**
- 1. REMOVE 30"Ø WASH WATER HEADER PIPING AND SUPPORTS.
 - 2. REMOVE 30"Ø WASH WATER RATE OF FLOW CONTROL VALVE AND FLOW METER. PROVIDE TEMPORARY BLIND FLANGE AT PIPE DISCONNECT POINT.
 - 3. REMOVE 30"Ø WASH WATER FITTINGS, COUPLINGS AND SUPPORTS.
 - 4. PIPE REMOVAL LIMITS. PROVIDE TEMPORARY BLIND FLANGE
 - 5. REMOVE PIPE HANGERS
 - 6. REMOVE 30"Ø WASH WATER CYLINDER OPERATED BUTTERFLY VALVES AND CONTROLS.
 - 7. REMOVE ½" AUTOMATIC AIR RELEASE VALVES
 - 8. REMOVE 30" COUPLING

LEGEND

 ITEMS TO BE REMOVED

DATE	REVISIONS	BY	LINE IS 2 INCHES AT FULL SCALE (IF NOT 2" - SCALE ACCORDINGLY)	 ENGINEERING. SURVEYING. SOLUTIONS. TBPE FIRM NO. F-2103 TBPLS FIRM NO. 10060700 2020 E. MILLS AVENUE El Paso, TX 79901 (915) 533-1418 FAX: (915) 533-4972		 1/20/2023				CANAL WATER TREATMENT PLANT FILTER GALLERY IMPROVEMENTS	DRAWING NUMBER
02/17/23	⚠️ AMENDED NOTATIONS PER ADDENDUM NO. 2	RGB	W.O.: 061720-8 DATE: JAN. 2023 DESIGNED: I.D.R. DRAWN: A.A. CHECKED: R.A.L. APPROVED: R.G.B.							SHEET TITLE	
										DEMOLITION SECTION	D103
											SHEET No. 6 OF 34



FILTER GALLERY PLAN VIEW

SCALE 1" = 4.0'

KEYED NOTES

- 1. INSTALL NEW 30"Ø CEMENT LINED STEEL PIPE.
- 2. INSTALL NEW 24"Ø GLOBE RATE OF FLOW VALVE WITH ACTUATOR.
- 3. INSTALL NEW ½" AUTOMATIC AIR RELEASE VALVE.
- 4. INSTALL NEW 24"Ø CEMENT LINED STEEL PIPE AND FITTINGS.
- 5. INSTALL NEW 30"Ø BLIND FLANGE.
- 6. INSTALL NEW 30" X 24" REDUCER (GROOVE X FLANGE).
- 7. INSTALL NEW 24" CEMENT LINED STEEL 90 ELBOW.
- 8. INSTALL NEW 30" CEMENT LINED STEEL TEE.
- 9. INSTALL NEW 30"Ø VICTAULIC COUPLINGS.
- 10. PREPARE AND COAT EXISTING WASH WATER SUPPLY, FILTER EFFLUENT, AND WASTE PIPING, AND APPURTENANCES TO MATCH NEW PIPE COATING

Feb 20, 2023 - 4:28pm
\\SERVER\CLIENT\EI Paso Water\61720-8 Design - Canal WTP Filter Gallery\05-CADD\05-Filter Gallery\FINAL - 100%M101-M112 WASHWATER PIPE SHEET\SIR.dwg

DATE	REVISIONS	BY
02/17/23	AMENDED NOTATIONS PER ADDENDUM NO. 2	RGB

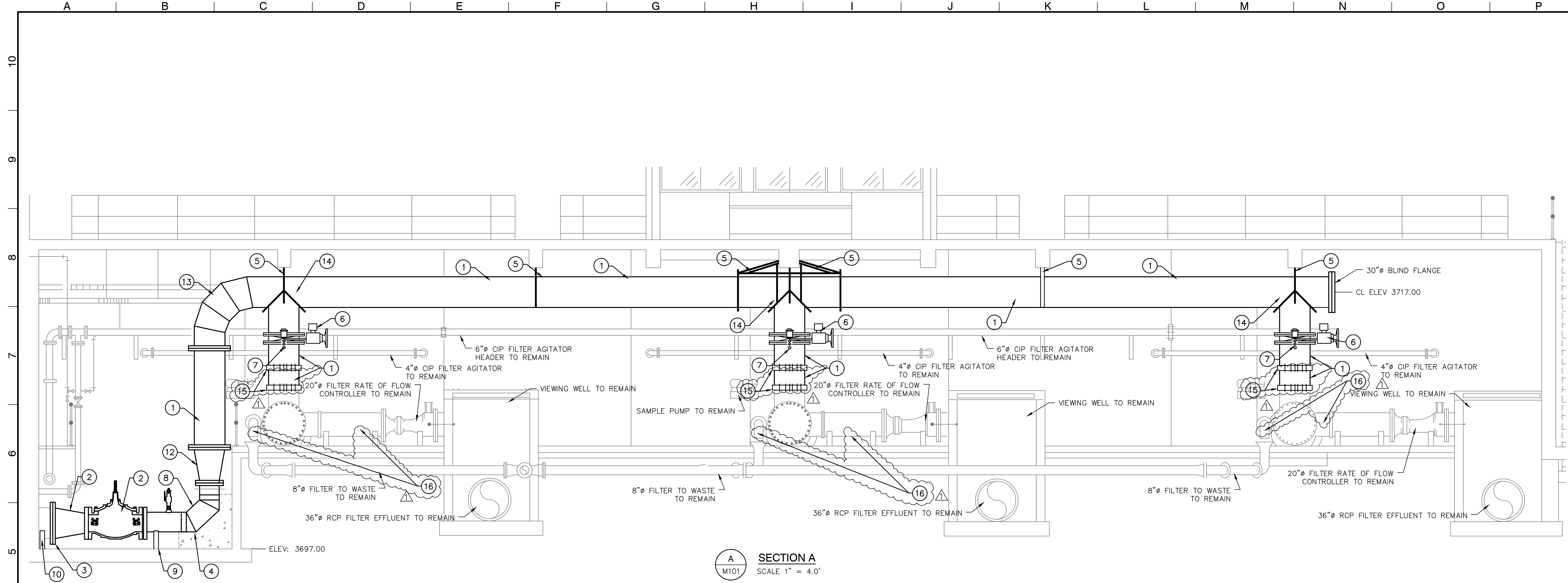
LINE IS 2 INCHES AT FULL SCALE (IF NOT 2" - SCALE ACCORDINGLY)
W.O.: 061720-8
DATE: JAN. 2023
DESIGNED: I.D.R.
DRAWN: A.A.
CHECKED: R.A.L.
APPROVED: R.G.B.

ENGINEERING. SURVEYING. SOLUTIONS.

TBPE FIRM NO. F-2103 TBPLS FIRM NO. 10060700
2020 E. MILLS AVENUE El Paso, TX 79901
(915) 533-1418 FAX: (915) 533-4972

CANAL WATER TREATMENT PLANT FILTER GALLERY IMPROVEMENTS
SHEET TITLE
FILTER GALLERY WASH WATER PIPE PLAN

DRAWING NUMBER
M101
SHEET No. 7 OF 34

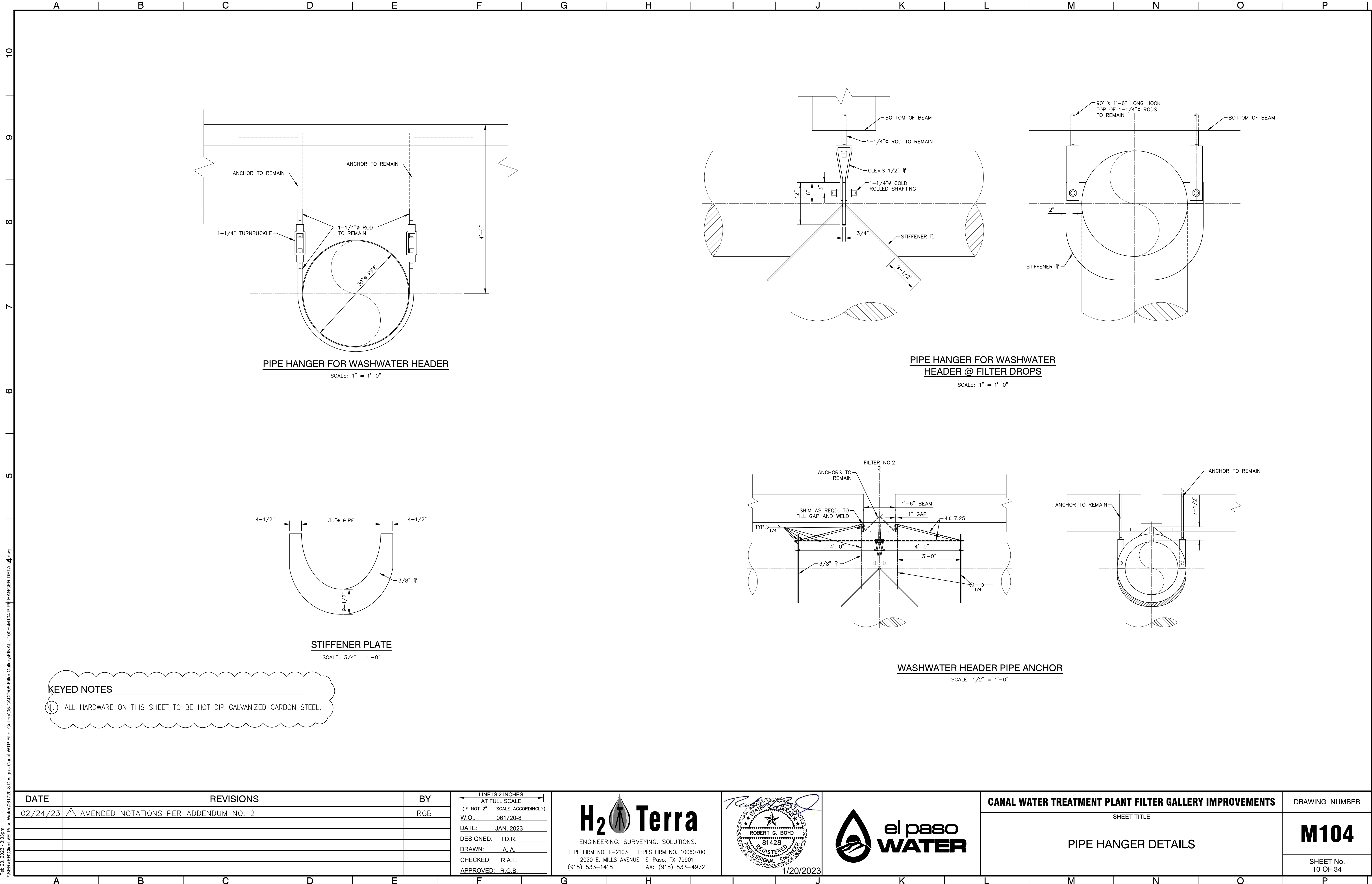


KEYED NOTES

- 1. INSTALL NEW 30"Ø CEMENT LINED STEEL PIPE.
- 2. INSTALL NEW 24"Ø GLOBE TYPE RATE OF FLOW CONTROL VALVE WITH ACTUATOR.
- 3. INSTALL NEW 30"Ø VICTAULIC JOINTS.
- 4. RESURFACE EXISTING THRUST BLOCK AND MOUNT NEW 24Ø CEMENT LINED STEEL 90° ELBOW.
- 5. INSTALL NEW PIPE HANGERS. SEE DETAILS ON DRAWING M104.
- 6. INSTALL NEW 30"Ø WASH WATER MOTOR OPERATED BUTTERFLY VALVES WITH ACTUATOR. CONNECT TO EXISTING CONTROLS. SEE ELECTRICAL DRAWINGS
- 7. INSTALL NEW ½" AUTOMATIC AIR RELEASE VALVE.
- 8. INSTALL NEW 24"Ø CEMENT LINED STEEL PIPE AND FITTINGS.
- 9. INSTALL NEW 2" PIPE STANCHION SADDLE. SEE SHEET M103 FOR DETAILS.
- 10. INSTALL NEW 30"Ø CONCRETE SADDLE. SEE SHEET M103 FOR DETAILS.
- 11. INSTALL NEW 30" X 24" REDUCER (GROOVED X FLANGE).
- 12. INSTALL NEW 30: X 24" REDUCER (FLANGE X FLANGE).
- 13. INSTALL NEW 30" CEMENT LINED STEEL 90 ELBOW.
- 14. INSTALL NEW 30" CEMENT LINED STEEL TEE.

- 15. INSTALL NEW 30" COUPLING.
- 16. PREPARE AND COAT EXISTING WASH WATER SUPPLY, FILTER EFFLUENT, AND WASTE PIPING, AND APPURTENANCES TO MATCH NEW PIPE COATING.

DATE		REVISIONS				BY	LINE IS 2 INCHES AT FULL SCALE (IF NOT 2" - SCALE ACCORDINGLY)		H ₂ Terra		el paso WATER		CANAL WATER TREATMENT PLANT FILTER GALLERY IMPROVEMENTS				DRAWING NUMBER		
02/17/23		AMENDED NOTATIONS PER ADDENDUM NO. 2				RGB	W.O.: 061720-8 DATE: JAN. 2023 DESIGNED: I.D.R. DRAWN: A.A. CHECKED: R.A.L. APPROVED: R.G.B.		ENGINEERING. SURVEYING. SOLUTIONS. TBPE FIRM NO. F-2103 TBPLS FIRM NO. 10060700 2020 E. MILLS AVENUE El Paso, TX 79901 (915) 533-1418 FAX: (915) 533-4972		1/20/2023		SHEET TITLE FILTER GALLERY WASH WATER PIPE SECTION				M102		
													SHEET No. 8 OF 34						
A		B				C	D	E	F	G	H	I	J	K	L	M	N	O	P



Feb 23, 2023 - 3:33pm
\\SERVER\\Client\\El Paso Water\\61720-8 Design - Canal WTP Filter Gallery\\05-CADD\\05-Filter Gallery\\FINAL - 100%\\M104 PIPE HANGER DETAIL.dwg

DATE	REVISIONS	BY
02/24/23	1 AMENDED NOTATIONS PER ADDENDUM NO. 2	RGB

LINE IS 2 INCHES AT FULL SCALE (IF NOT 2" - SCALE ACCORDINGLY)
W.O.: 061720-8
DATE: JAN. 2023
DESIGNED: I.D.R.
DRAWN: A.A.
CHECKED: R.A.L.
APPROVED: R.G.B.




ENGINEERING. SURVEYING. SOLUTIONS.

TBPE FIRM NO. F-2103 TBPLS FIRM NO. 10060700
2020 E. MILLS AVENUE El Paso, TX 79901
(915) 533-1418 FAX: (915) 533-4972



1/20/2023



CANAL WATER TREATMENT PLANT FILTER GALLERY IMPROVEMENTS	DRAWING NUMBER
SHEET TITLE	
PIPE HANGER DETAILS	M104
	SHEET No. 10 OF 34

ALL ERV DUCTWORK SHALL BE
FABRICATED WITH 24 GA ALUMINUM.

KEYED NOTES

1. REMOVE FLUE VENT , CAP ABOVE ROOF AND WEATHER PROOF AS REQUIRED.
2. REMOVE VENT FROM JOB SITE AND ENLARGE EXISTING OPENING AS REQUIRED TO INSTALL NEW OUTSIDE AIR INTAKE.
3. EXTEND RETURN DUCT DOWN AND TERMINATE 6" A.F.F SECURE TO WALL AT 6' O.C. MIN.
4. 12" EXHAUST DUCT SHALL TERMINATE THROUGH THE WALL WITH A 24"X14" WALL LOUVER WITH INTEGRAL INSECT SCREEN.
5. INSTALL ERV 14" A.F.F SUPPORT FROM STRUCTURE AS NOTED.
6. EXTEND 12" OUTSIDE AIR DUCT UP THROUGH THE ROOF AND TERMINATE 18" ABOVE FINISHED ROOF WITH A GOOSNECK AND BIRDSCREEN.

1 **MECHANICAL PLAN**
M301R / 3/16" = 1'-0"

CU-FILTER RM1
CU-FILTER RM2

ISSUED
02-23-23

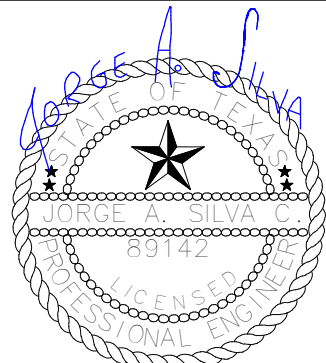
2 **MECH ROOF PLAN**
M301R / 3/16" = 1'-0"

NEW CONDENSING UNIT LOCATIONS

3 **OUTSIDE VIEW**
M301



2431 E. YANDELL DR. EL PASO TEXAS, 79903 P.915.219.4901 F.
915.219.5298
WWW.AEGELPASO.COM TEXAS ENGINEERING FIRM F-11396



THE SEAL APPEARING ON THIS DOCUMENT
WAS AUTHORIZED BY JORGE A. SILVA, P.E.,
99142 ON AUGUST 25, 2022.
ALTERATION OF A SEALED DOCUMENT WITHOUT
PROPER NOTIFICATION TO THE RESPONSIBLE
ENGINEER IS AN OFFENSE UNDER THE TEXAS
ENGINEERING PRACTICE ACT.

LINE IS 2 INCHES
AT FULL SCALE
(IF NOT 2" = SCALE
INDICATE)
W.O.: 061720-8
DATE: AUG. 2022
DESIGNED: I.D.R.
DRAWN: A.A.
CHECKED: R.A.L.
APPROVED: R.G.B.

H₂Terra
ENGINEERING, SURVEYING, SOLUTIONS.

TBPE FIRM NO. F-2103 TBPLS FIRM NO. 10060700
2020 E. MILLS AVENUE EL PASO, TX 79901
(915) 533-1418 FAX: (915) 533-4972

100%
CONSTRUCTION
DOCUMENTS



CANAL WTP FILTER GALLERY IMPROVEMENTS

SHEET TITLE
MECHANICAL IMPROVEMENT PLAN

DRAWING NUMBER

M301R

SHEET No.
16 OF 34